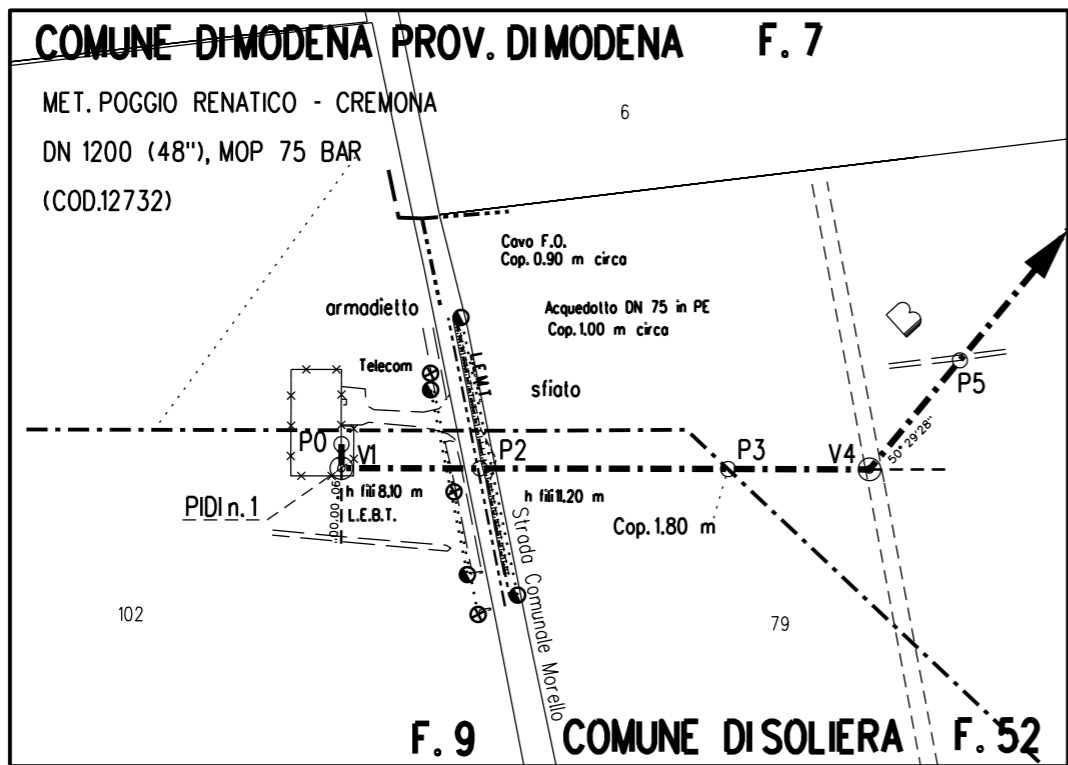
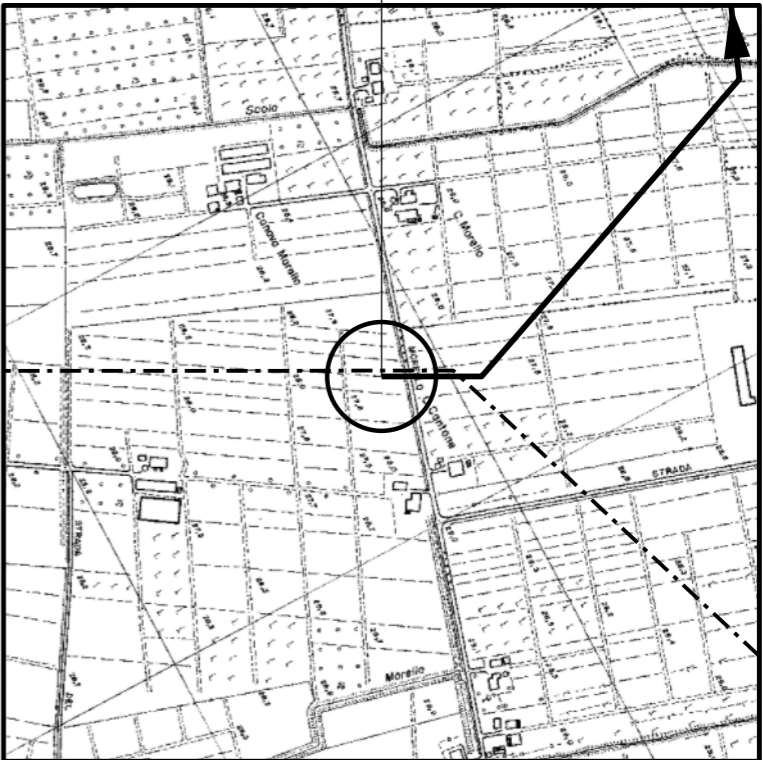


DOCUMENTI DI RIFERIMENTO	N.



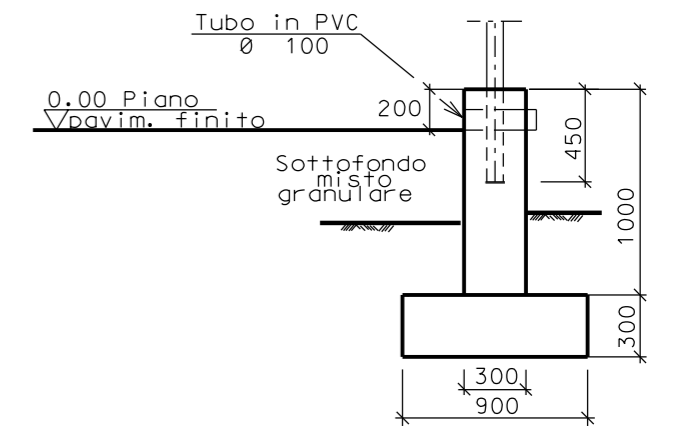
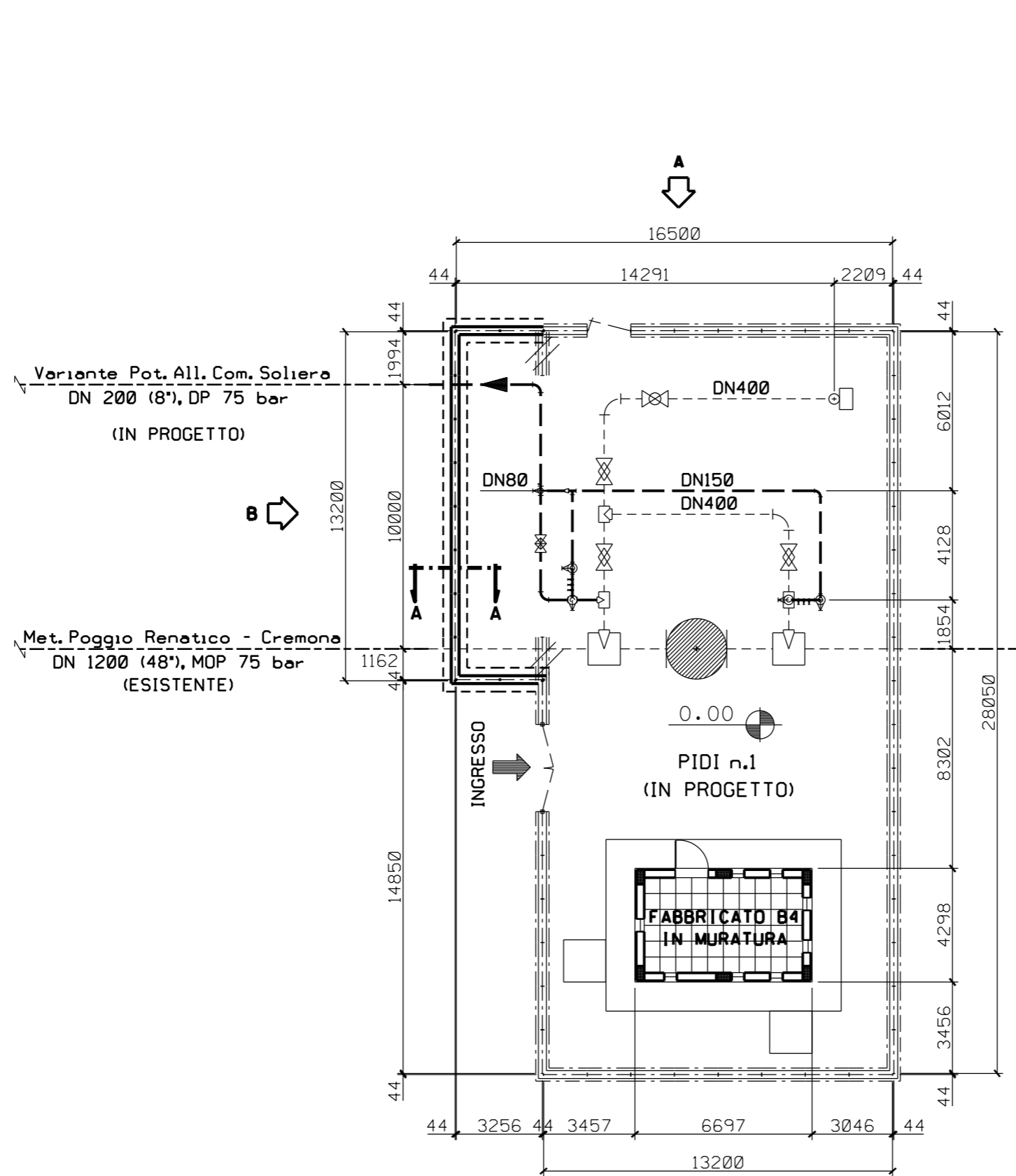
PLANIMETRIA 1:2000  
 COMUNE DI MODENA F.7 - F.9  
 COMUNE DI SOLIERA F.52

PIDI N. 1

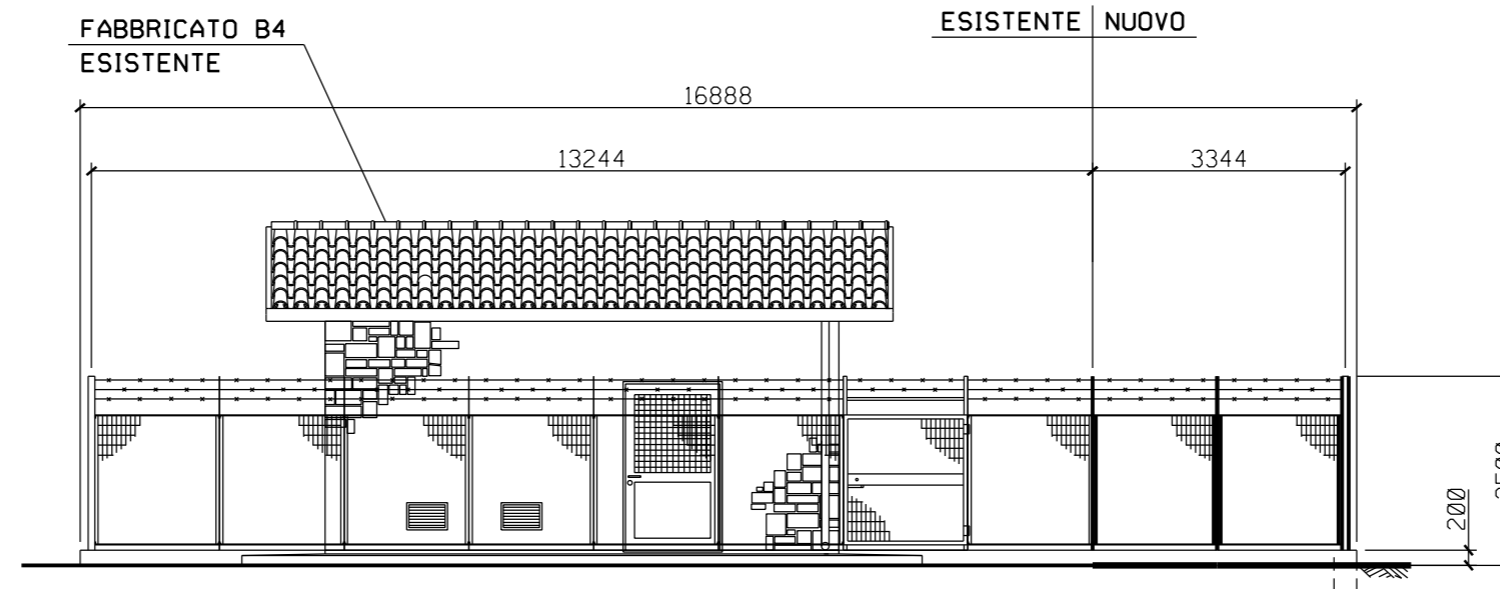


COROGRAFIA 1:10000  
 CTR 201083

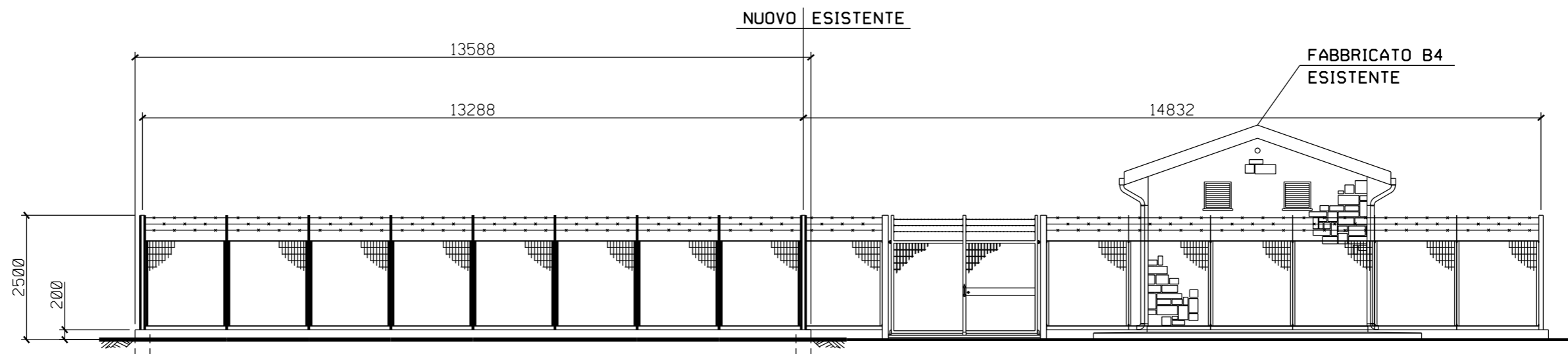
0	MAG. '15	EMISSIONE	MONTINI	CANI	SABBATINI
Rev.	DATA	DESCRIZIONE	ELABORATO	VERIFICATO	APPROVATO
CLIENTE	SNAM RETE GAS	PROGETTISTA		WBS NR/04043/ R-L64 COD.TEC.9105077 COMMESSA SAIPEM 023050	UNITA' N°. 000
Variante Pot. All. Com. Soliera DN 200 (8"), DP 75 bar			DIS. N. LC-D-83460		
			REVISIONE 0		
PUNTO DI INTERCETTAZIONE DI DERIVAZIONE IMPORTANTE (PIDI) n.1 Loc. "C. Cantone"			FG.	1	DI 3
			SCALA		



SCALA 1:200



PROSPETTO A



PROSPETTO A

SCALA 1:100